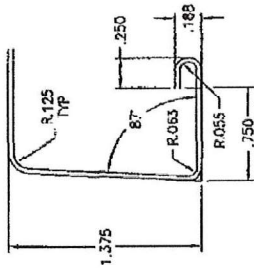
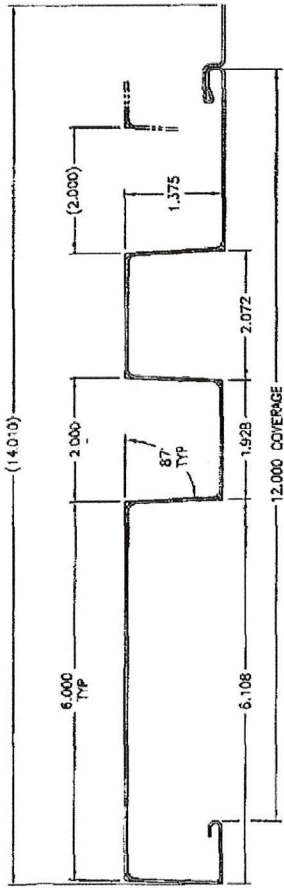
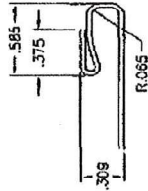


DETAIL 1

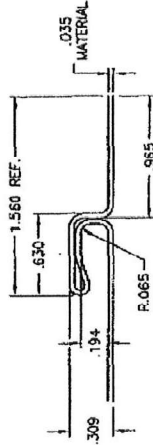
INBOARD SIDE



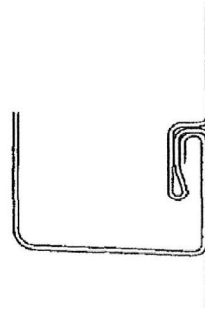
INBOARD DETAIL



CLIP DETAIL



OUTB'D DETAIL



LAP DETAIL

ALL DIMENSIONS ARE BOTTOM OF SHEET INTERCEPTS (U.O.N.)
 ALL FORMING RADII ARE 0.125 UNLESS OTHERWISE NOTED

<input type="checkbox"/>	APPROVED	<input type="checkbox"/>	APPROVED AS NOTED
BY		DATE	

TOLERANCE STANDARDS FOR THICKEST METAL:

*ACCUMULATION	(+ or -)	1/16 in
DEPTH	(+ or -)	1/32 in
RADI	(+ or -)	1/32 in
ANGLES	(+ or -)	2 degrees
CAMBER		1/8 in in 10ft
SKI		1/8 in in 10ft
DIVE		1/8 in in 10ft

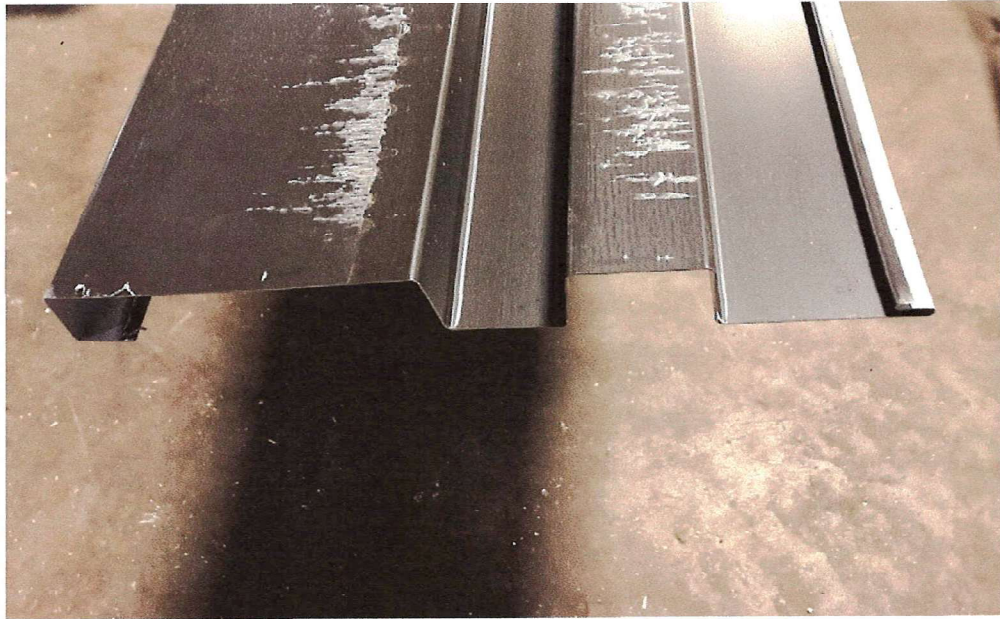
*NET VARIATION FOR COMBINED DIMENSIONS

APPROX. COIL WIDTH: 21.492"
 ALUM. THICKNESS RANGE: .032-.050
 GRADE OF MATERIAL: 33-40 KSI.
 STEEL THICKNESS RANGE: .024 - .030
 GRADE OF MATERIAL: 50 KSI.

This drawing contains proprietary information of ASC Machine Tools which may not be utilized in any manner without the written consent thereof. © COPYRIGHT

A. S. C. MACHINE TOOLS, INC.
 SPOKANE, WASHINGTON
 PETERSEN ALUMINUM CORP.
 BOX RIB P4

1-7-19
 PR27660 TP-2937
 JP2937 DWG JS



PANEL PROFILE



PANEL CLIP